

Double Beam Couplings RBC ... DWC-STE

with clamp
made of steel, stainless



Features

- Small coupling for universal use
- Backlash-free angle-synchronous transmission of rotary movements
- High radial misalignment
- For medium torques
- Made of stainless steel 17-4PH, Material no. 1.4542
- Optimum compensation of shaft misalignments
- Typical applications: General mechanical engineering, apparatus engineering, spindle drives

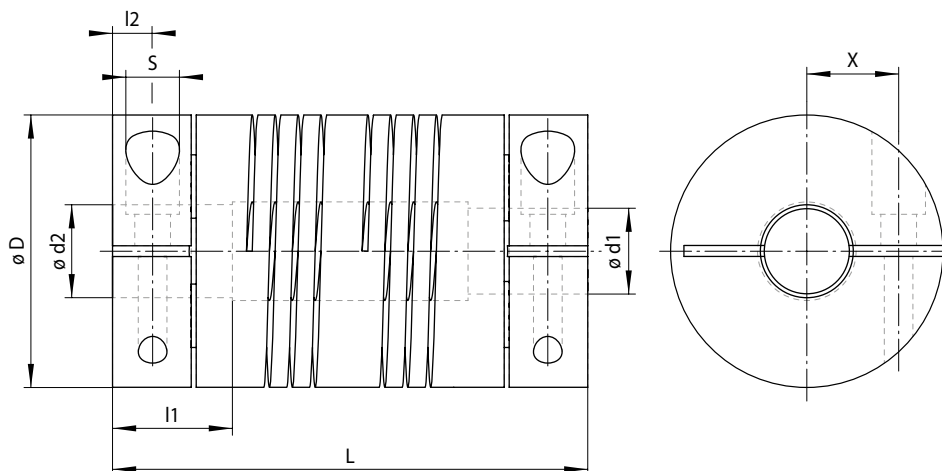
Order example

	Code
Coupling design	RBC
Coupling size	0100
Type	DWC
Material: • Steel, stainless	STE
Bore diameter d1 = 10 mm	010.00
Bore diameter d2 = 8 mm	008.00

RBC 0100 DWC-STE-010.00-008.00

Double Beam Couplings RBC ... DWC-STE

with clamp
made of steel, stainless



15-1

Coupling size	Standard bore combinations d1 / d2 mm	Torque			Max. speed min ⁻¹	Stiffness		Moment of inertia ¹⁾ x10 ⁻⁶ kgm ²	Screw tightening torque Nm	Permissible shaft misalignment		
		short-term Nm	one-sided Nm	reversing Nm		Torsional stiffness Ct Nm/rad	Axial spring stiffness N/mm			Axial mm	Radial mm	Angular °
0100	6 / 6	6,8	3,4	1,7	3 600	70	56	12,6	2,0	± 0,25	± 0,75	5
	8 / 6	5,9	3,0	1,5		47	36					
	8 / 8	5,9	3,0	1,5		47	36					
	10 / 6	5,0	2,5	1,3		30	22					
	10 / 8	5,0	2,5	1,3		30	22					
	10 / 10	5,0	2,5	1,3		30	22					
0125	8 / 8	14,2	7,1	3,6	3 600	130	64	42,3	4,7	± 0,25	± 0,75	5
	12 / 8	9,6	4,8	2,4		66	31					
	12 / 12	9,6	4,8	2,4		66	31					
	15 / 8	7,3	3,7	1,8		29	17					
	15 / 12	7,3	3,7	1,8		29	17					
	15 / 15	7,3	3,7	1,8		29	17					
0150	12 / 12	23,5	11,8	5,9	3 600	190	78	96,1	4,7	± 0,25	± 0,75	5
	14 / 12	20,7	10,4	5,2		143	60					
	14 / 14	20,7	10,4	5,2		143	60					
	16 / 12	17,5	8,8	4,4		105	46					
	16 / 14	17,5	8,8	4,4		105	46					
	16 / 16	17,5	8,8	4,4		105	46					

Bore tolerance: 0/+ 0.05 mm; Shaft tolerance (recommended): - 0.005/- 0.013 mm

¹⁾ Values based on the smallest bore diameter

Coupling size	D	L	l1	l2	S	X	Weight ¹⁾
	mm	mm	mm	mm	mm	mm	g
0100	25,4	44,5	9,4	3,8	M3	7,9	150
0125	31,8	60,2	13,0	5,6	M4	9,7	315
0150	38,1	66,5	16,8	5,6	M4	13,0	507

¹⁾ Values based on the smallest bore diameter

Other sizes and designs with special bores (including inch dimensions) on request